



**RESCO**

*Auto ID Solutions for OEMs*



**Custom Solutions Delivered Right  
The First Time, On-Time**

# OVERVIEW

## What We Do

RESCO provides custom auto ID solutions for its customers' data collection and authentication challenges.

## Where We Do It

RESCO has company owned operations in both **Baltimore, MD** and **Acuña, MX**. The combination of these facilities allows RESCO to be highly flexible, very responsive, and deliver finished solutions at world-class pricing.



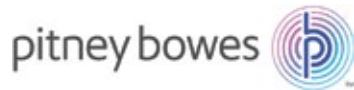
RESCO's Acuña, Mexico facility

## Who We Do It For

RESCO provides components for some of the world's largest and most trusted corporations, including:



RESCO's Baltimore, Maryland facility





### ***Data Collection Devices and Equipment***

RESCO Electronics has the right solution to meet most all data collection needs. Whether it is as simple as reading common symbologies or as complicated as a full vision system, RESCO can provide the product for the requirement. Types of equipment include:

- **1D and 2D Handheld Scanners**
- **1D and 2D Fixed Position Scanners**
- **1D and 2D Scan Engines**
- **Data Collectors and Hand-Held Terminals**
- **Vision Systems**
- **Displays**
- **Bar Code Printers**

### ***Device and Equipment Design Services and Customization***

RESCO can do more than just provide equipment...it can also help your organization select the right product for the application and can make hardware and software modifications to satisfy custom requirements. Engineering and integration services include:

- **Scanning requirement assessments and base product recommendations**
- **Hardware modification (i.e. case modification, mounting customization, custom electrical connection)**
- **Software modification and custom programming**
- **Software and firmware revision locks**

11166 07080

### ***Supply Chain and Product Support Services***

RESCO provides a number of supply chain and post-sale product support services for its customers. Typically, these services are part of a broader solution designed to address a specific challenge a customer faces. Among the most common services are:

- **Kanban and just-in-time delivery**
- **Custom labeling, packaging, and kitting**
- **Lot code and serial number tracking**
- **Warranty repairs**

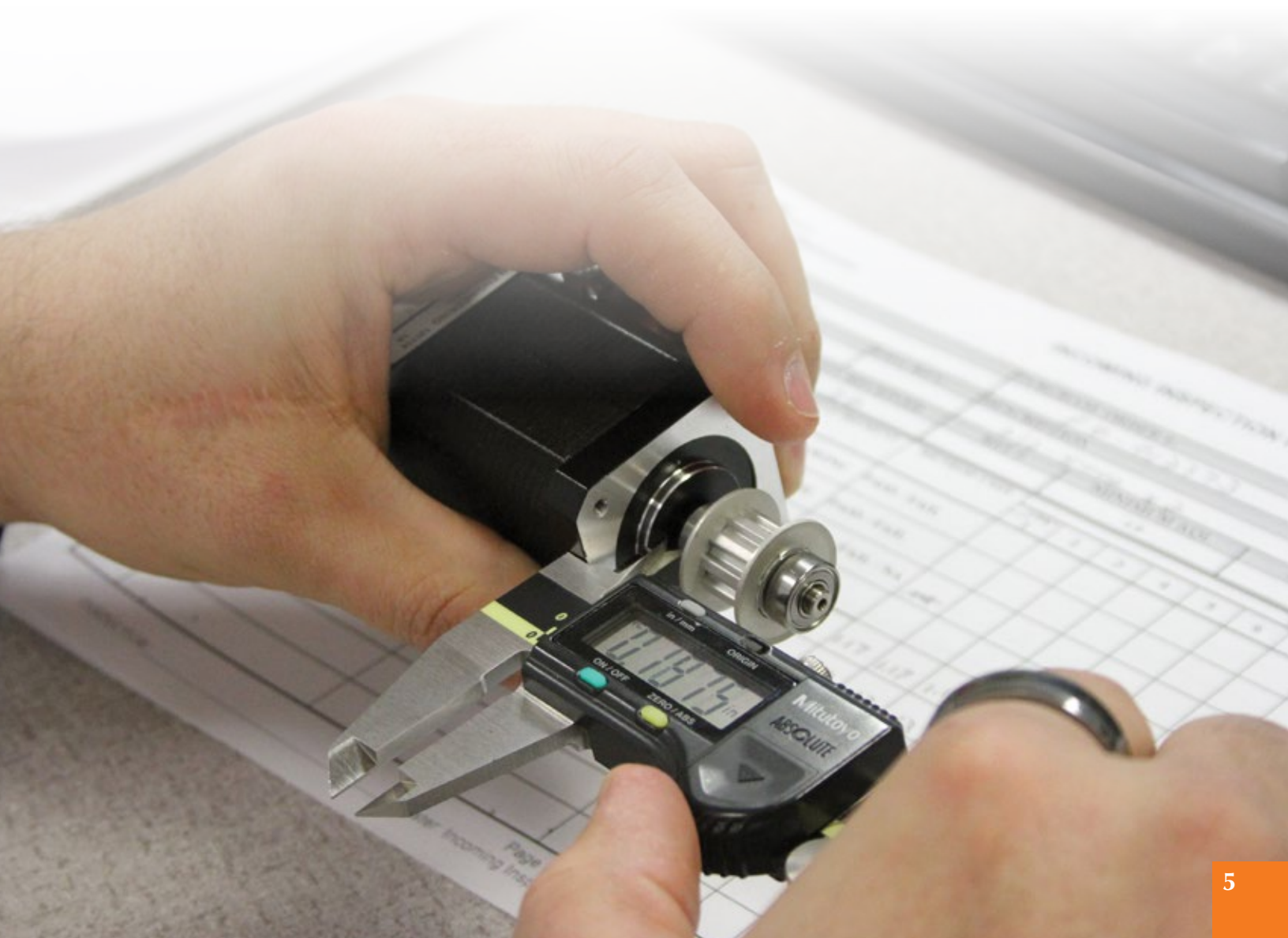


### **RESCO Quality Management System**

The RESCO Quality Management System, the RQMST<sup>™</sup>, is more than a written set of policies and procedures. It reflects a fundamental approach to the way we work with our customers. What makes our quality system unique is how it pervades every aspect of RESCO's operation. At the core of the system are a series of metrics that closely track our performance. These metrics create the basis for RESCO's commitment to continual improvement. The result is that we consistently meet the high standards our customers have come to expect.



The RQMS is certified to the ISO 9001 standard. All of RESCO's facilities are UL recognized and build to both IPC/WHMA-A-620 and J-STD-001.



# HISTORY



RESCO was founded in 1932 as Radio Electric Service Company, a supplier of replacement parts to radio and TV service technicians. In the 1950s RESCO began selling electronic components to OEMs. Then in the 1980s it began supplying bar code scanners to some of its customers. In 2011, RESCO purchased an existing production facility in Acuna, MX.

## Did You Know?

RESCO put parts on the moon! We supplied electronic components into the color and black & white television cameras on the 1969 Apollo 11 lunar landing mission.



Since RESCO's founding in 1932, six core values have come to define the organization. These values have stood the test of time and today serve as a guide to how RESCO associates interact with customers, suppliers, and each other.

**Customers First**

We put the needs of our customers first.

**Integrity and Honesty**

We act with integrity and honesty in our dealings with customers, suppliers, and co-workers.

**Ownership and Accountability**

We take ownership of results and are accountable to one another.

**Respect**

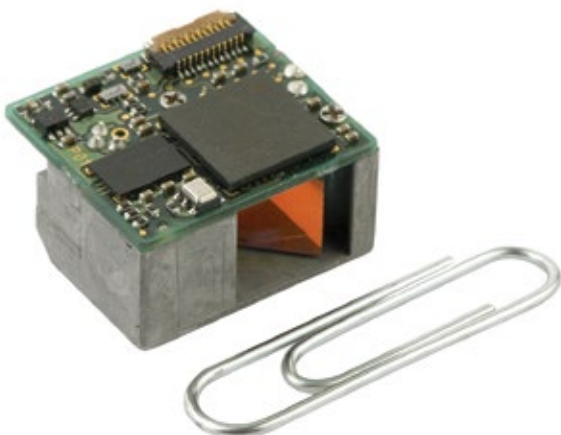
We treat our customers, suppliers, and co-workers with respect.

**Growth**

We embrace learning, change, and continual improvement.

**Teamwork**

We place the success of our team above individual achievement.





4961 Mercantile Road  
Baltimore, MD 21236  
(T) 410.931.8200 | (T) 800.638.1242  
Email: [info@rescoelectronics.com](mailto:info@rescoelectronics.com)  
[RescoElectronics.com](http://RescoElectronics.com)

