



RESCO

*Cable and Electromechanical
Assembly Contract Manufacturing*

**Custom Solutions Delivered Right
The First Time, On-Time**

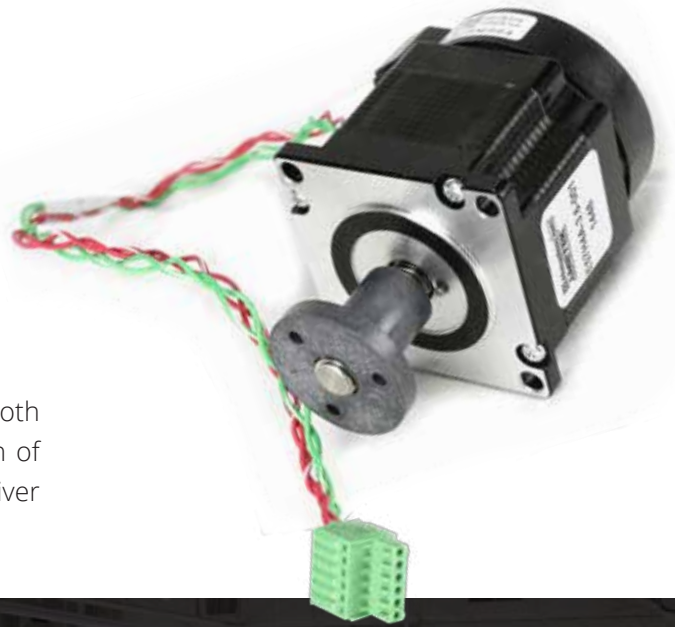
OVERVIEW

What We Do

RESCO provides custom manufacturing and supply chain solutions to customers' cable harness and electromechanical assembly challenges.

Where We Do It

RESCO has company-owned manufacturing operations in both **Baltimore, Maryland** and **Acuña, Mexico**. The combination of these facilities allows RESCO to be flexible, responsive, and deliver finished assemblies at highly competitive prices.



RESCO's Acuña, Mexico facility

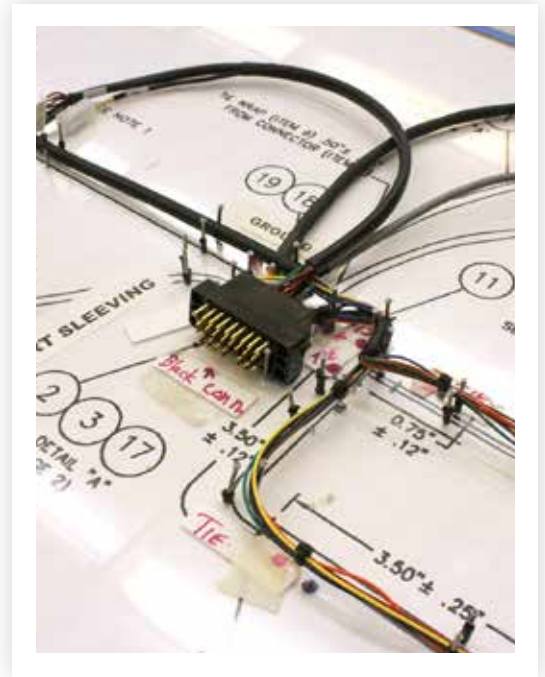
Who We Do It For

RESCO provides components for some of the world's largest and most trusted corporations, including:



RESCO's Baltimore, Maryland facility





Cable Assemblies

RESCO supports the engineering, component sourcing and manufacturing of most types of cable assemblies. Assembly types include:

- **Wire Harnesses**
- **Discrete Wire Assemblies**
- **Ribbon Cables**
- **Heavy Gauge Power Cables**
- **RF Cables**
- **Data and Communication Cables**

Electromechanical Assemblies

RESCO supports the engineering, component sourcing and assembly or modification of many types of electromechanical devices and sub-assemblies. Some examples include:

- **Fans and Blowers**
- **Valves and Solenoids**
- **Sensors**
- **Displays**
- **Bar Code Readers**
- **Chassis and Terminal Blocks**



Supply Chain Services

RESCO provides a number of supply chain services for its customers. Typically these services are part of a broader solution designed to address a specific challenge a customer faces. Among the most common supply chain services are:

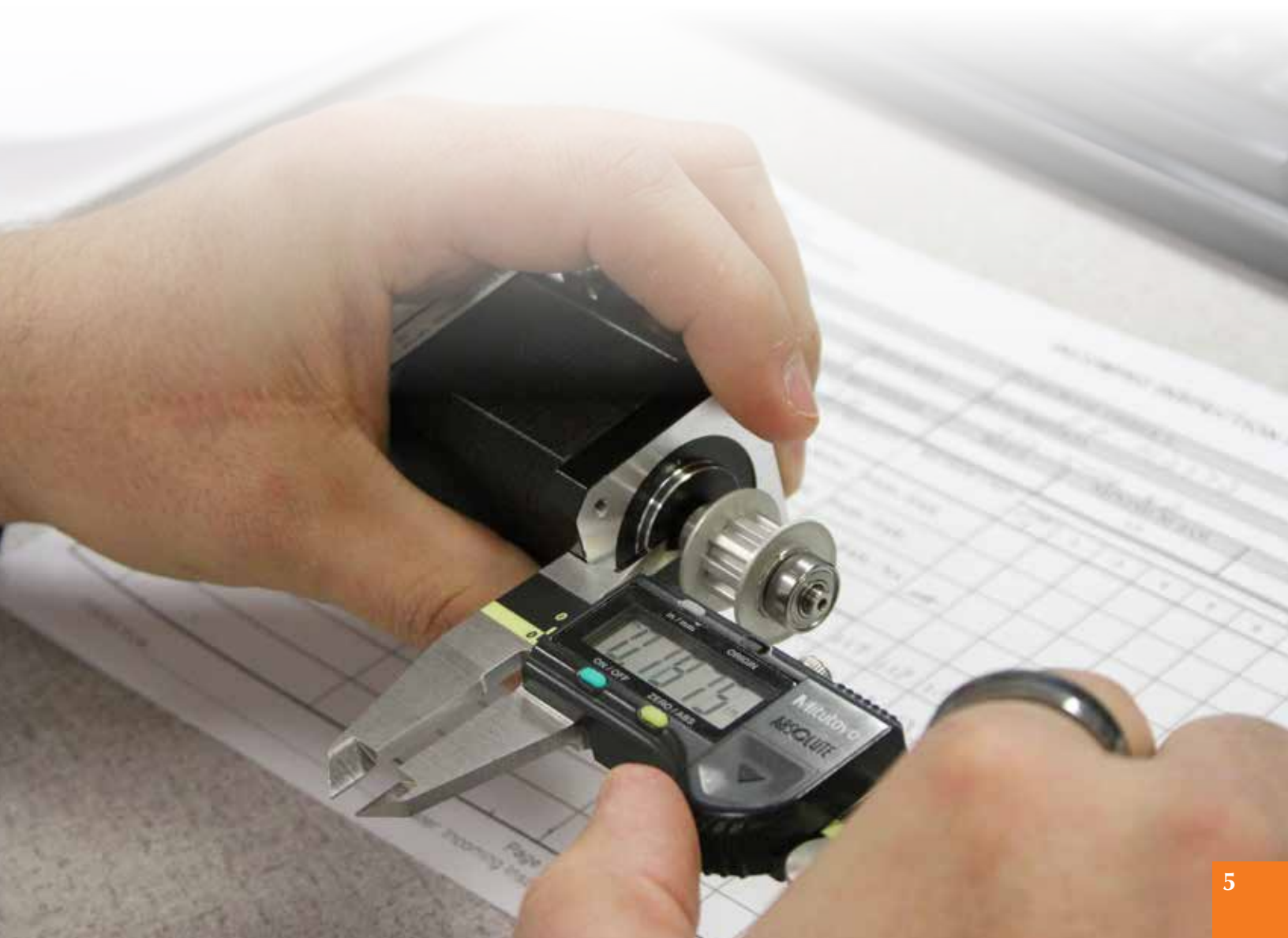
- **Bonded inventory and custom stocking**
- **Dock-to-stock and auto-replenishment programs**
- **Kanban and just-in-time delivery**
- **Custom labeling, packaging, and kitting**
- **Lot code and serial number tracking**
- **RoHS and REACH compliance**

RESCO Quality Management System

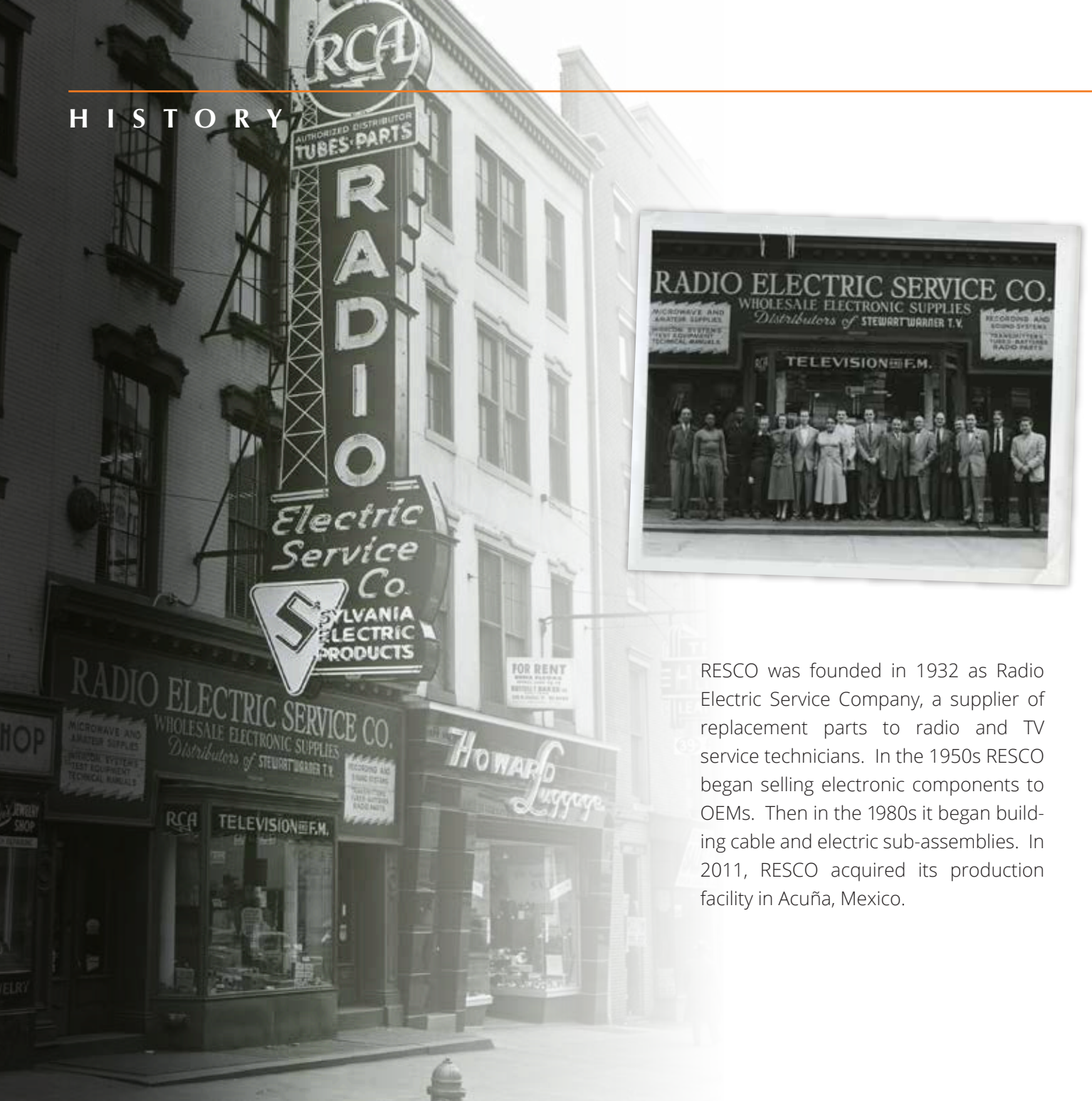
The RESCO Quality Management System, the RQMST[™], is more than a written set of policies and procedures. It reflects a fundamental approach to the way we work with our customers. What makes our quality system unique is how it pervades every aspect of RESCO's operation. At the core of the system are a series of metrics that closely track our performance. These metrics create the basis for RESCO's commitment to continual improvement. The result is that we consistently meet the high standards our customers have come to expect.



The RQMS is certified to the ISO 9001 standard. All of RESCO's facilities are UL recognized and build to both IPC/WHMA-A-620 and J-STD-001.



HISTORY



RESCO was founded in 1932 as Radio Electric Service Company, a supplier of replacement parts to radio and TV service technicians. In the 1950s RESCO began selling electronic components to OEMs. Then in the 1980s it began building cable and electric sub-assemblies. In 2011, RESCO acquired its production facility in Acuña, Mexico.

Did You Know?

RESCO put parts on the moon! We supplied electronic components into the color and black & white television cameras on the 1969 Apollo 11 lunar landing mission.



Since RESCO's founding in 1932, six core values have come to define the organization. These values have stood the test of time and today serve as a guide to how RESCO associates interact with customers, suppliers, and each other.

Customers First

We put the needs of our customers first.

Integrity and Honesty

We act with integrity and honesty in our dealings with customers, suppliers, and co-workers.

Ownership and Accountability

We take ownership of results and are accountable to one another.

Respect

We treat our customers, suppliers, and co-workers with respect.

Growth

We embrace learning, change, and continual improvement.

Teamwork

We place the success of our team above individual achievement.





4961 Mercantile Road
Baltimore, MD 21236
(T) 410.931.8200 | (T) 800.638.1242
Email: info@rescoelectronics.com
RescoElectronics.com

